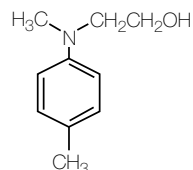


**Description**

FIRSTCURE MHPT accelerator is an amine cure accelerator used to promote free radical generation by organic peroxide initiators in addition polymerizations. Free radicals are generated at or below room temperature by chemical reduction of the peroxide. These polymerizations include unsaturated polyester resin, vinyl ester, and acrylate systems. FIRSTCURE MHPT accelerator is either a low-melting-point white solid or a tan liquid depending upon storage temperature. It is sensitive to air and light, so the presence of either will tend to hasten discoloration. This discoloration does not affect purity and is important only where the final product quality is affected by color. It is typically used in concentrations ranging from 0.1% to 0.5%. Peroxide concentration varies with application but is typically around 1%.



**CAS 2842-44-6**

N-(2-Hydroxyethyl)-N-methyl-para-toluidine  
Empirical formula C<sub>10</sub>H<sub>15</sub>NO

**Physical Properties**

Appearance ..... white solid or tan liquid  
 depending on storage temperature  
 Molecular weight ..... 165.24  
 Specific gravity, liquid ..... 1.026  
 Boiling point, 8mm Hg, °C ..... 136 - 138  
 Melting point, °C ..... 28 - 30  
 Solubility in water, mg/ml ..... 3.3

**Specifications**

N-(2-Hydroxyethyl)-N-methyl-para-toluidine (GC), %, min ..... 95

**Shipping Information****Container Information**

55-gallon non-returnable steel drums (440 lbs/200 kg net)

6-gallon non-returnable steel pails (40 lbs/18.18 kg net)

**Shipping Classifications**

Proper shipping name:

**Safety and Handling Information**

For specific information on the safe handling of this product, please refer to the material safety data sheet. Copies are available upon request.

**Chemical Registration Numbers**

CAS: 2842-44-6

TSCA

EINECS: 220-638

The information presented herein is believed to be accurate and reliable, but is presented without guarantee or responsibility on the part of Albemarle Corporation. It is the responsibility of the user to comply with all applicable laws and regulations and to provide for a safe workplace. The user should consider any health or safety hazards or information contained herein only as a guide, and should take those precautions which are necessary or prudent to instruct employees and to develop work practice procedures in order to promote a safe work environment. Further, nothing contained herein shall be taken as an inducement or recommendation to manufacture or use any of the herein materials or processes in violation of existing or future patents.



**AMERICAS** 451 Florida Street • Baton Rouge, Louisiana 70801-1765 • Tel: 225-388-7402 or 800-535-3030 • Fax: 225-388-7848 **EUROPE** Parc Scientifique Einstein • Rue du Bosquet 9 • B-1348 Louvain-la-Neuve Sud, Belgium • Tel: 32-10-48-1711 • Fax: 32-10-48-1717 **EUROPE** B116 • 95 Rue Du General De Gaulle • F-68802 Thann-Cedex, France • Tel: 33-3-8938-4600 • Fax: 33-3-8938-4601 **ASIA PACIFIC** 111 Somerset Road #13-03 • Singapore 238164 • Tel: 65-732-6286 • Fax: 65-737-4155 **ASIA PACIFIC** 16th Floor, Fukoku Seimei Building • 2-2, Uchisaiwaicho, 2-Chome • Chiyoda-ku, Tokyo 100, Japan • Tel: 81-3-5251-0791 • Fax: 81-3-3500-5623 **ASIA PACIFIC** China World Tower, Room 1317 • No. 1 Jian Guo Men Wai Avenue • Beijing 100004 China • Tel: 86-10-6505-4153 or 86-10-6505-4154 • Fax: 86-10-6505-4150